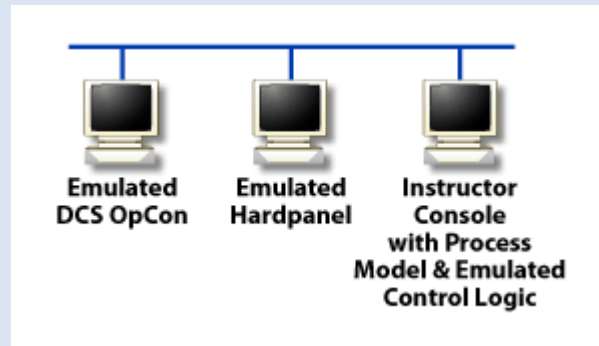


The operator station is the heart of any simulation system. It is the window through which an operator or an engineer monitors, controls and manages the process plant. We offer diverse selection of operator stations:

- Full Function interface to actual Distributed Control Systems (DCS)
- Emulated DCS Operator stations

ProSimulator provides emulation for various Distributed Control Systems (DCS). Fully emulated DCS use an emulation of both the control logic and the HMI. Emulation is achieved by translating the plant control logic and graphics into the simulator environment, effectively reproducing the functional operation of the actual controls and the graphic interface of the HMI.



At present the following DCS Emulations are available in the ProSimulator:

[ProSimulator CS3000 emulation software](#)

[ProSimulator Centum VP emulation software](#)

[ProSimulator TDC3000 emulation software](#)

[ProSimulator Experion emulation software](#)

[ProSimulator Fox I/A emulation software](#)

[ProSimulator ABB Harmony emulation software](#)

[ProSimulator SIEMENS PCS7 emulation software](#)

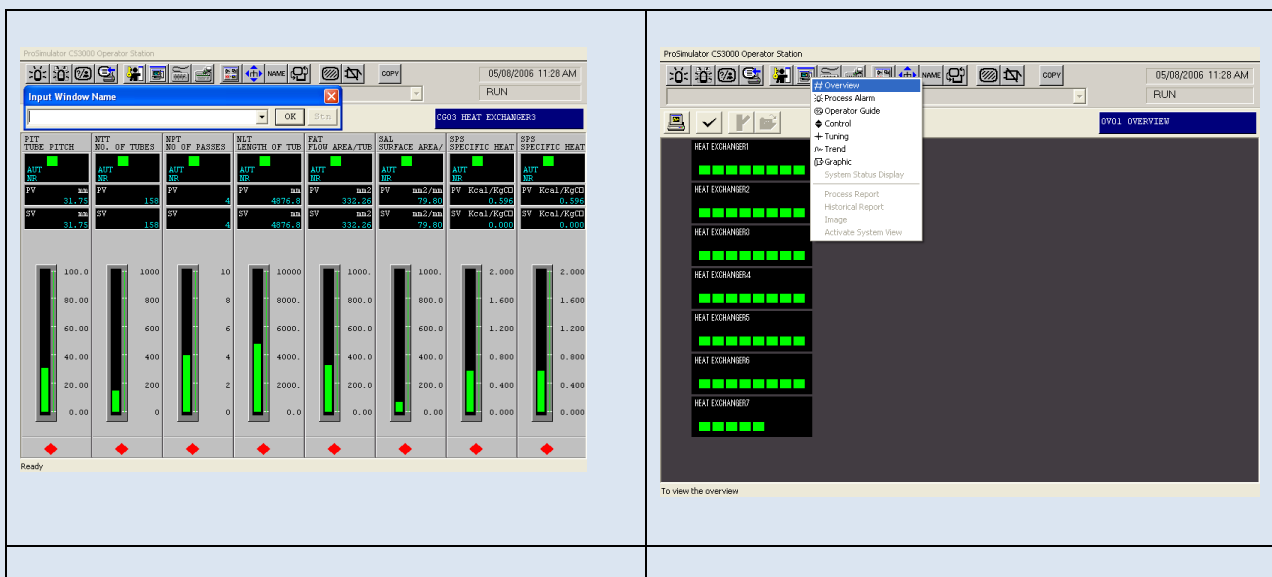
[ProSimulator EMERSON DELTA V emulation software](#)

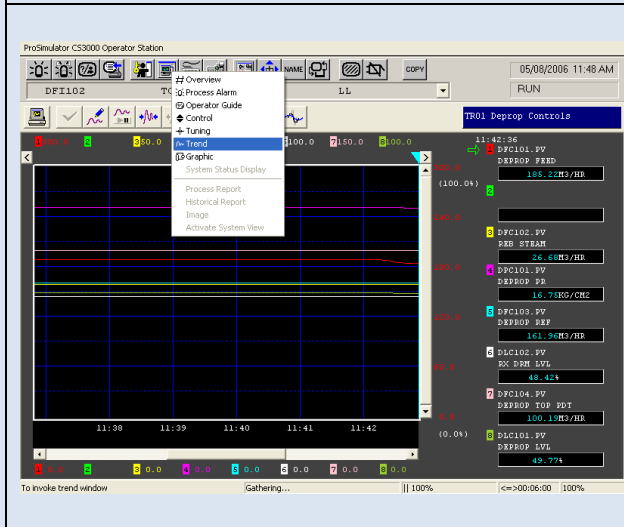
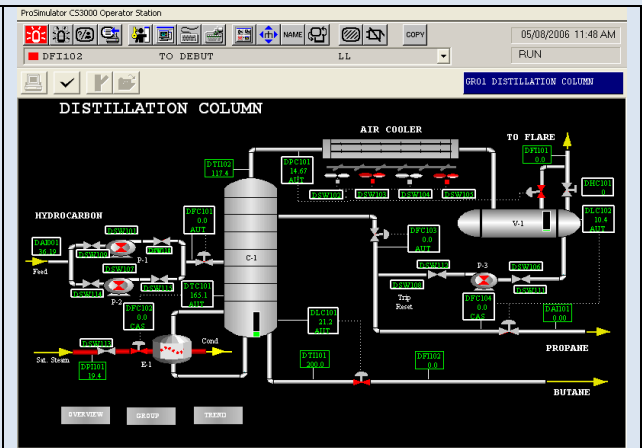
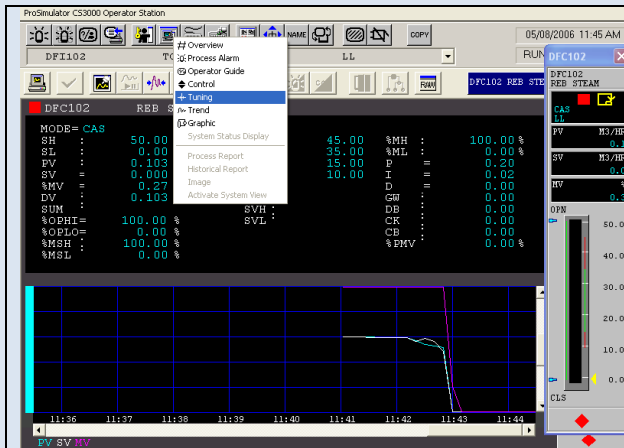
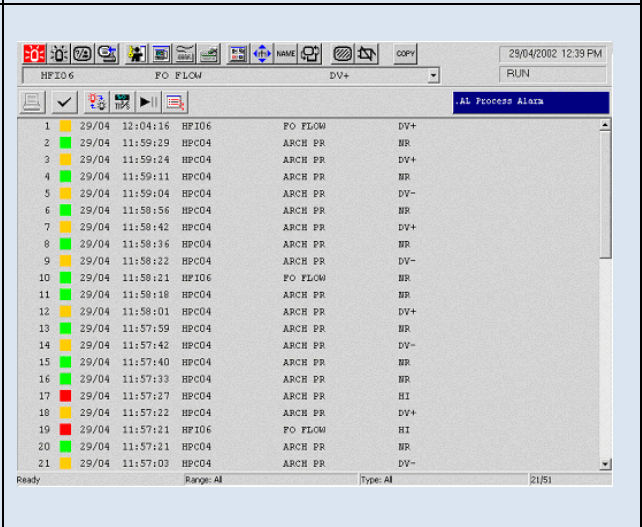
ProSimulator Emulation software emulates the displays of these operator stations in detail enabling operators to train using the same operational procedures as on the real DCS. Our Emulated Operator Stations do not require actual DCS hardware which provides significant cost savings for the simulator without compromising training realism.

CS3000 EMULATION SOFTWARE

ProSimulator CS3000 emulation contains the standard features of real DCS console. Using PC keyboard or simulated keyboard (on the screen keyboard), the trainee can operate the simulated plant. The CS3000 Emulated Operator Station software includes a high-fidelity, realistic simulation of the CS3000 HMI, with all of the operating displays, keyboard interactions, touch targets, and controls. Train your student operator on both Process and DCS using the same control room display types, including:

- Schematic or Graphics panel
- Overview Panel
- Control or Group Panel
- Detail Display Panel
- Alarm Panel
- Group Trend Display



ProSimulator CS3000 Operator Station

HPI06

FO FLOW

DV+

RUN

AL Process Alarm	Time	Process Name	Value	Unit	Alarm Type
1	29/04 12:04:16	HPI06	FO FLOW	DV+	
2	29/04 11:59:29	HPC04	ARCH PR	NR	
3	29/04 11:59:24	HPC04	ARCH PR	DV+	
4	29/04 11:59:11	HPC04	ARCH PR	NR	
5	29/04 11:59:04	HPC04	ARCH PR	DV-	
6	29/04 11:58:56	HPC04	ARCH PR	NR	
7	29/04 11:58:42	HPC04	ARCH PR	DV+	
8	29/04 11:58:36	HPC04	ARCH PR	NR	
9	29/04 11:58:22	HPC04	ARCH PR	DV-	
10	29/04 11:58:21	HPI06	FO FLOW	NR	
11	29/04 11:58:18	HPC04	ARCH PR	NR	
12	29/04 11:58:01	HPC04	ARCH PR	DV+	
13	29/04 11:57:59	HPC04	ARCH PR	NR	
14	29/04 11:57:42	HPC04	ARCH PR	DV-	
15	29/04 11:57:40	HPC04	ARCH PR	NR	
16	29/04 11:57:33	HPC04	ARCH PR	NR	
17	29/04 11:57:27	HPC04	ARCH PR	HI	
18	29/04 11:57:22	HPC04	ARCH PR	DV+	
19	29/04 11:57:21	HPI06	FO FLOW	HI	
20	29/04 11:57:21	HPC04	ARCH PR	NR	
21	29/04 11:57:03	HPC04	ARCH PR	DV-	

Ready

Range: All

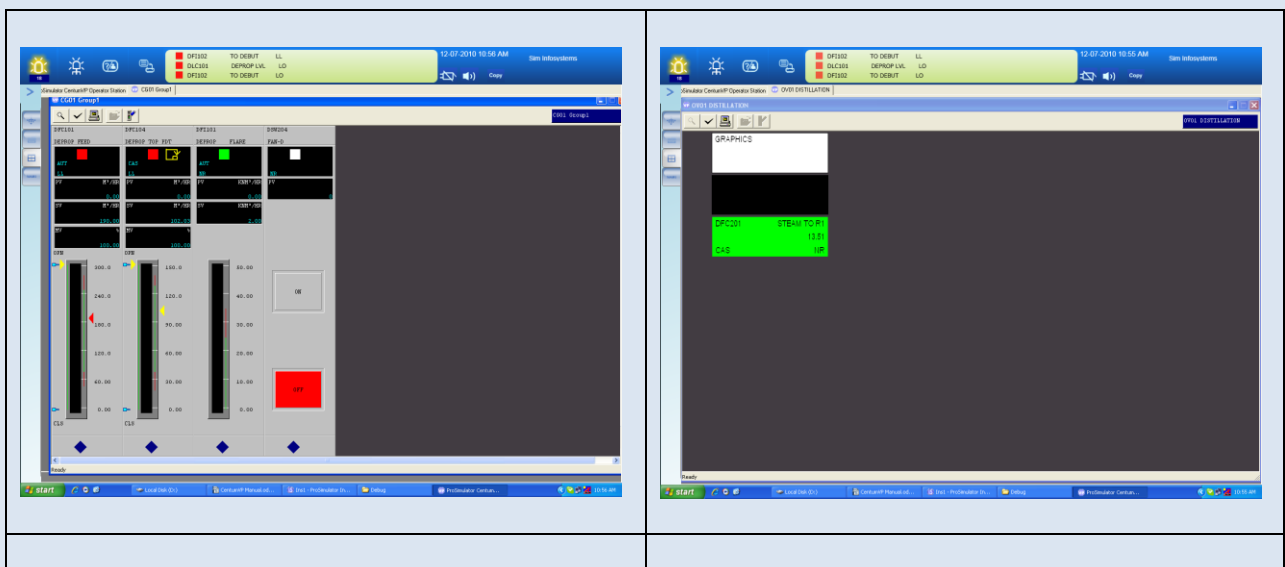
Type: All

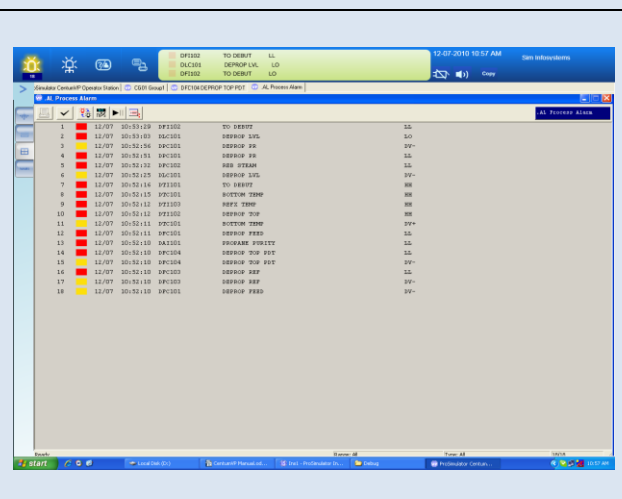
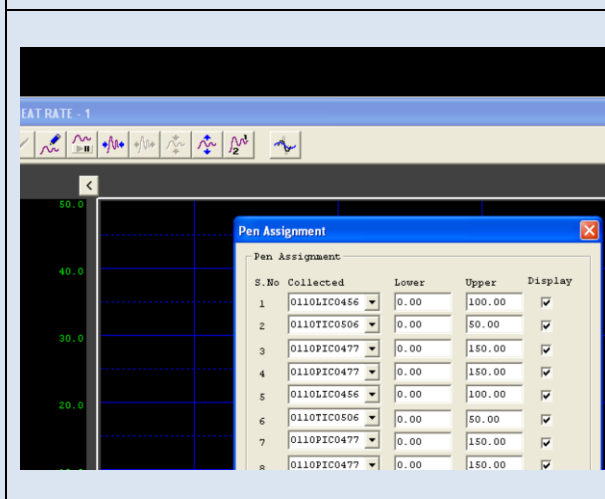
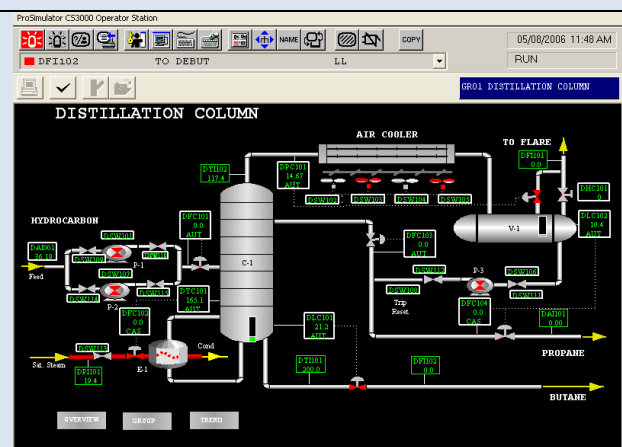
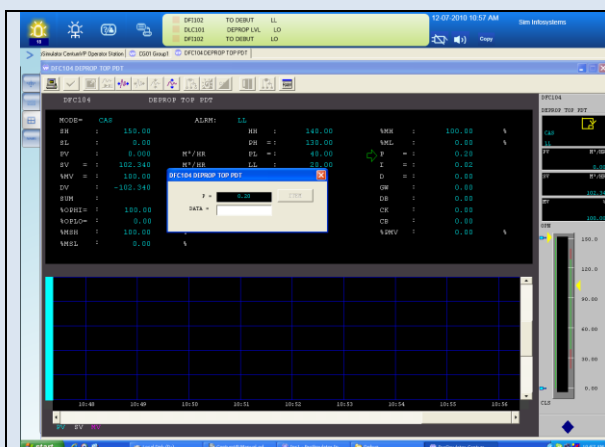
21/51

CENTUM VP EMULATION SOFTWARE

ProSimulator CENTUM VP emulation contains most of the standard features of real DCS console. Using PC keyboard or simulated keyboard (on the screen keyboard), the trainee can operate the simulated plant. The Centum VP Emulated Operator Station software includes a high-fidelity, realistic simulation of the Centum VP HMI, with all of the operating displays, keyboard interactions, touch targets, and controls. Train your student operator on both Process and DCS using the same control room display types, including:

- Overview Window
- Control Group Window
- Tuning Window
- Graphic Window
- Trend Group Window
- Process Alarm summary window

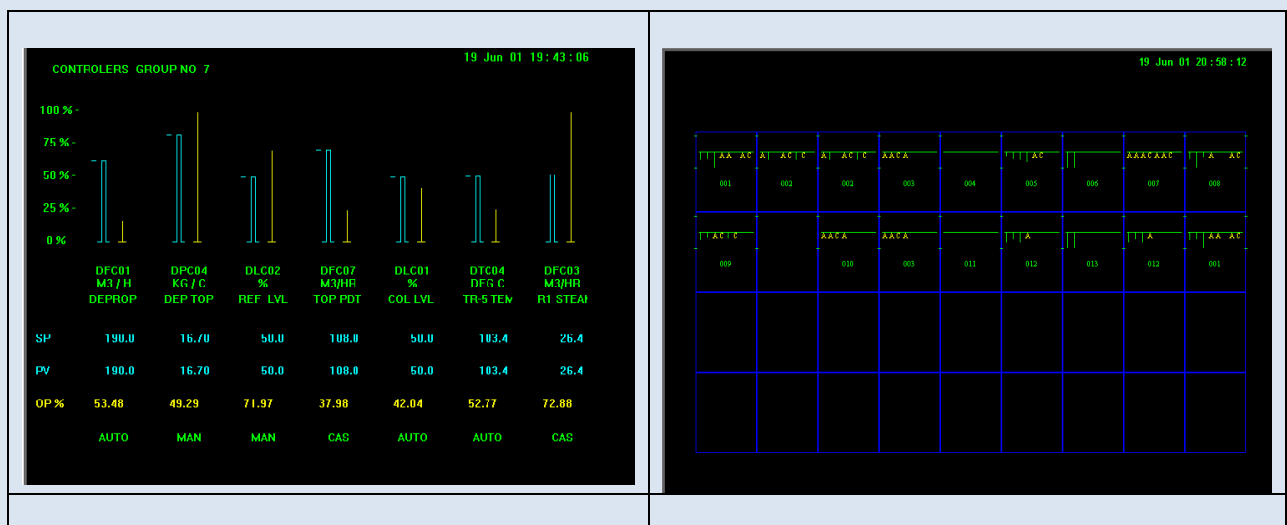


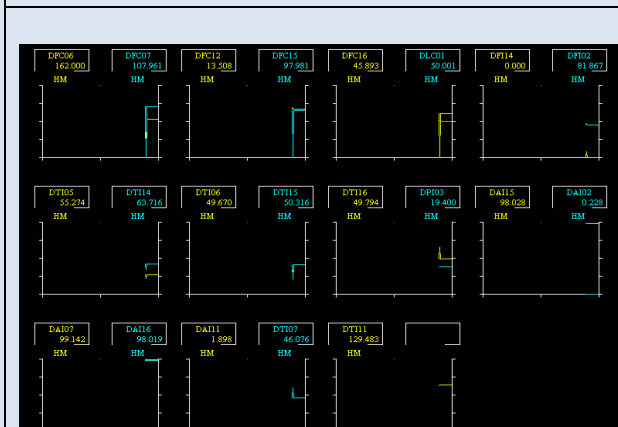
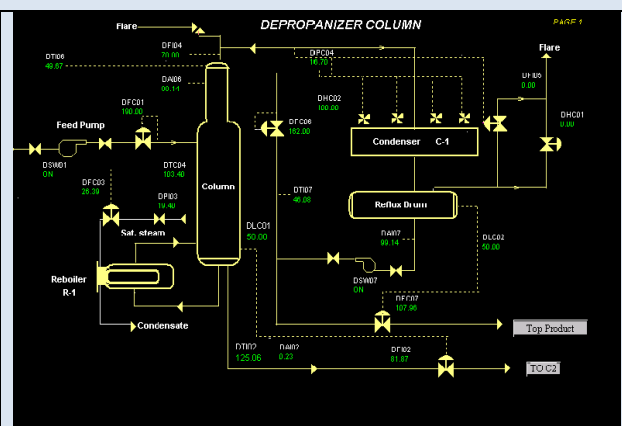
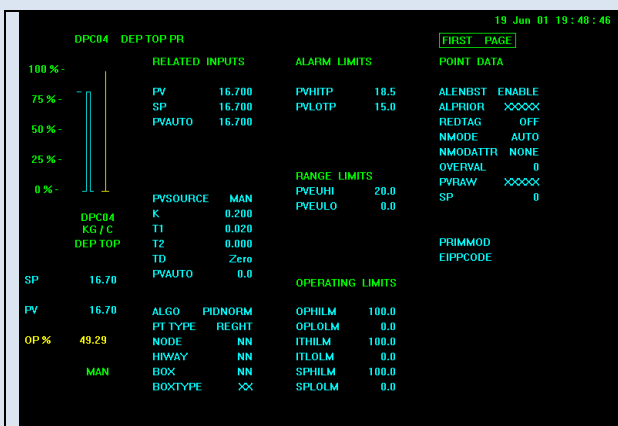


HONEYWELL TDC3000 EMULATION SOFTWARE

ProSimulator TDC3000 emulation contains most of the standard features of real DCS console. Using PC keyboard or simulated keyboard (on the screen keyboard), the trainee can operate the simulated plant. The TDC3000 Emulated Operator Station software includes a high-fidelity, realistic simulation of the TDC3000 HMI, with all of the operating displays, keyboard interactions, touch targets, and controls. Train your student operator on both Process and DCS using the same control room display types, including:

- Schematic Panel
- Overview Panel
- Control or Group Panel
- Detail Display Panel
- Alarm Annunciator Panel
- Area Alarm Summary Panel
- Unit Alarm Summary Panel
- Area Trend Display
- System Menu





19 Jun 01 20:30:02

AREA 1

ALARM SUMMARY

067 ALARMS PAGE 3

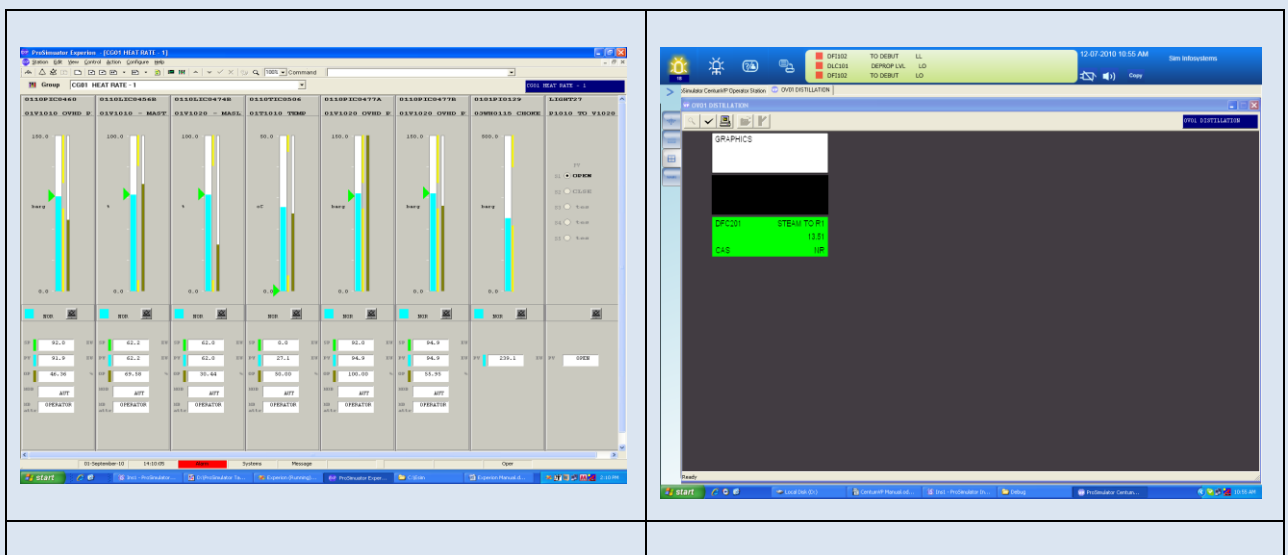
19:06:2001 20:32:01	DTC13	PVLO	TR-3 TEMP	C4	88.62	DEG C
19:06:2001 20:32:01	DTI07	PVHI	REFX TEMP	C3	55.20	DEG C
19:06:2001 20:32:00	DFI02	PVHI	DEPROP BOTTOMS	C3	150.00	M3 / HR
19:06:2001 20:32:00	DTI15	PVNR	DEB TOP TEMP	C3	41.76	DEG C
19:06:2001 20:32:00	DTI06	PVNR	DEB TOP TEMP	C3	43.15	DEG C
19:06:2001 20:32:00	DTI07	PVHI	DEBUT LVL	C4	76.06	%
19:06:2001 20:32:00	DLC01	PVHI	DEPROP LVL	C3	100.00	%
19:06:2001 20:31:59	DAI06	PVNR	DEP TOP COMPN	C3	98.24	%
19:06:2001 20:31:59	DFI11	PVHI	DEB BOTTOMS	C3	62.86	M3 / HR
19:06:2001 20:31:59	DTI07	PVNR	REFX TEMP	C3	52.04	DEG C
19:06:2001 20:31:59	DAI15	PVNR	DEB TOP COMPN	C4	97.31	%
19:06:2001 20:31:58	DAI02	PVHI	DEB BOT COMPN	C3	1.04	%
19:06:2001 20:31:58	DAI06	PVHI	DEP TOP COMPN	C3	98.95	%
19:06:2001 20:31:58	DAI15	PVHI	DEB TOP COMPN	C4	99.55	%
19:06:2001 20:31:58	DFI05	PVHI	DEP FLARE	C3	26.33	M3 / HR
19:06:2001 20:31:57	DTI06	PVLO	DEB TOP TEMP	C3	35.75	DEG C
19:06:2001 20:31:57	DAI11	PVHI	DEB BOT COMPN	C4	3.03	%
19:06:2001 20:31:57	DPC13	PVHI	DEB TOP PR	C4	6.55	KG/CM2
19:06:2001 20:31:57	DPC04	PVHI	DEP TOP PR	C3	18.74	KG / CM2
19:06:2001 20:31:56	DTI15	PVLO	DEB TOP TEMP	C3	39.88	DEG C

C3 **OK**

HONEYWELL EXPERION EMULATION SOFTWARE

ProSimulator Experion emulation contains most of the standard features of real DCS console. Using PC keyboard or simulated keyboard (on the screen keyboard), the trainee can operate the simulated plant. The Experion Emulated Operator Station software includes a high-fidelity, realistic simulation of the Honeywell Experion HMI, with all of the operating displays, keyboard interactions, touch targets, and controls. Train your student operator on both Process and DCS using the same control room display types, including:

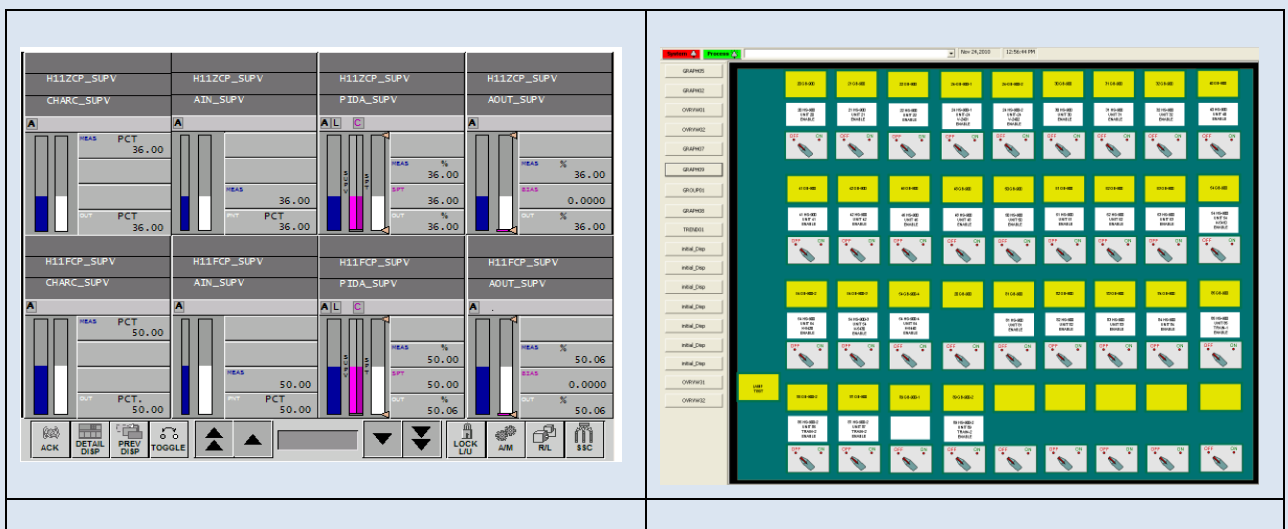
- System Menu
- Group Display
- Detail Page
- Graphic View
- Trend Display
- Alarm summary



FOXBORO FOX I/A EMULATION SOFTWARE

ProSimulator Fox I/A emulation contains most of the standard features of real DCS console. Using PC keyboard or simulated keyboard (on the screen keyboard), the trainee can operate the simulated plant. The Fox I/A Emulated Operator Station software includes a high-fidelity, realistic simulation of the Fox I/A HMI, with all of the operating displays, keyboard interactions, touch targets, and controls. Train your student operator on both Process and DCS using the same control room display types, including:

- System Menu
- Group Display
- Detail Page
- Graphic View
- Trend Display
- Alarm summary



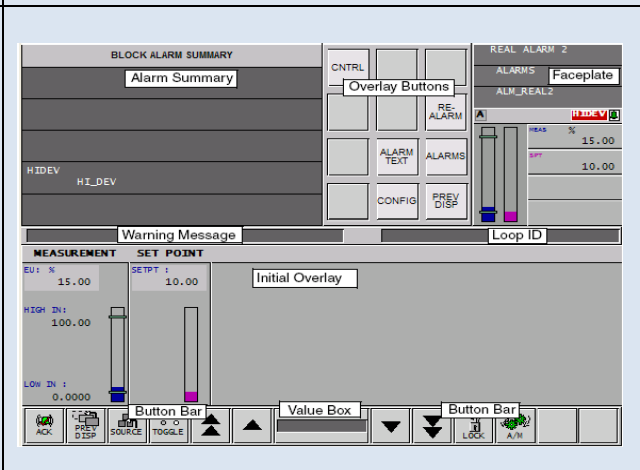
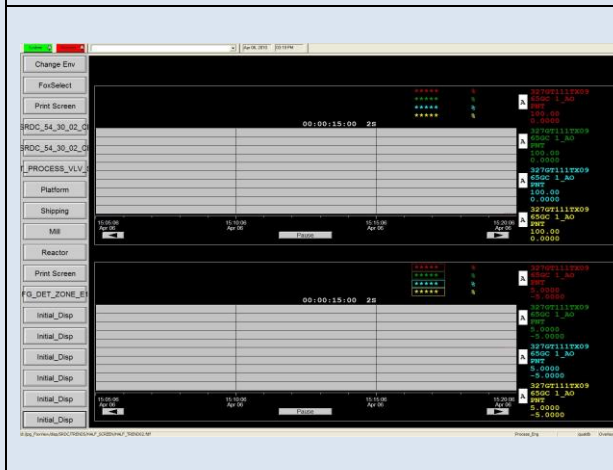
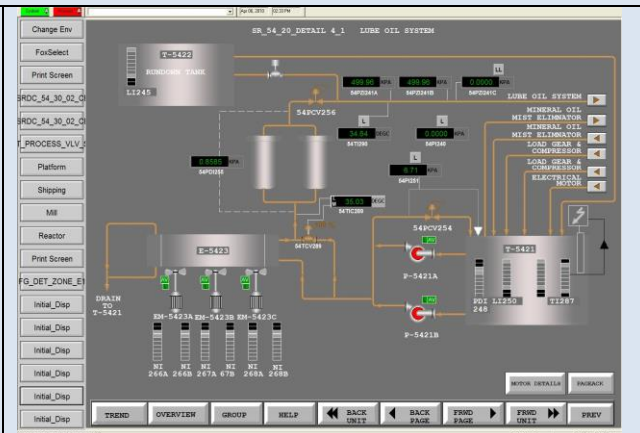
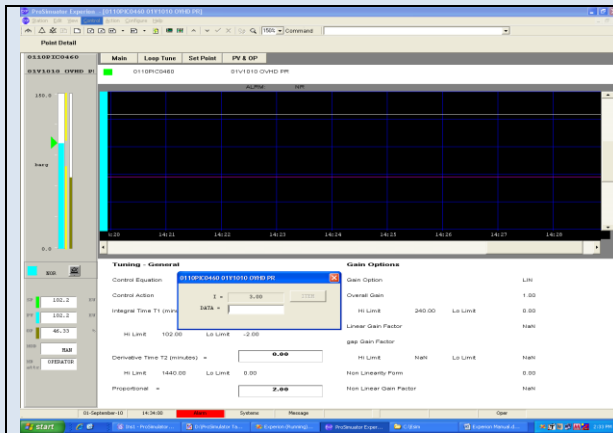
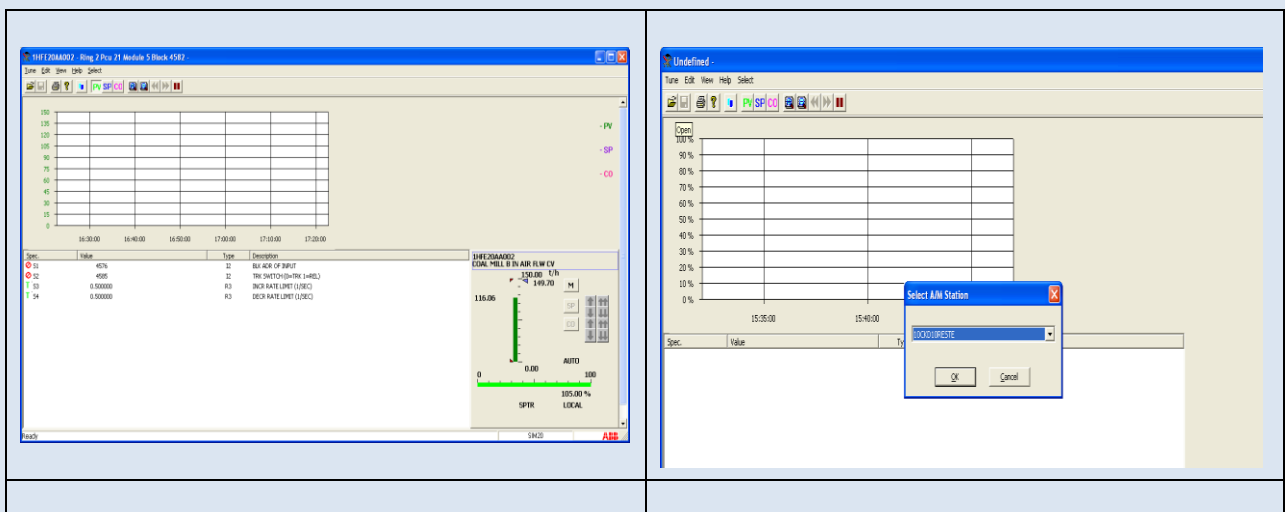
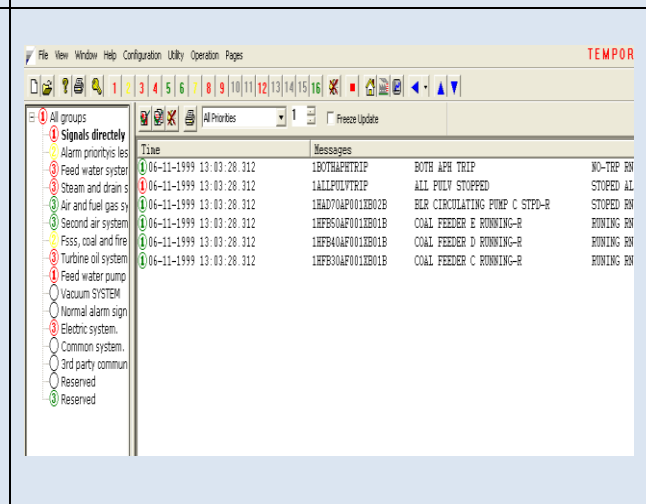
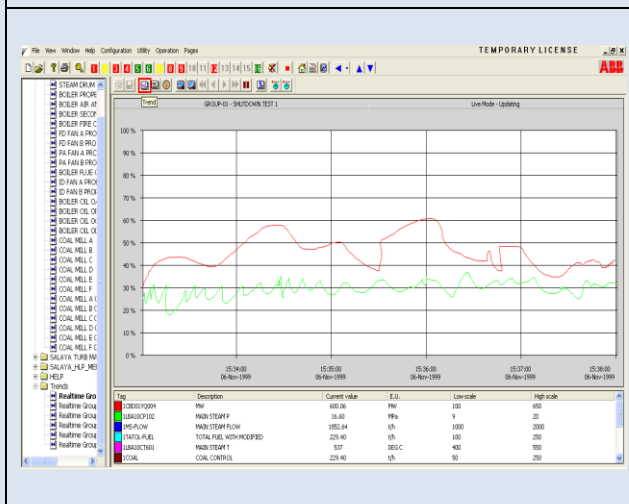
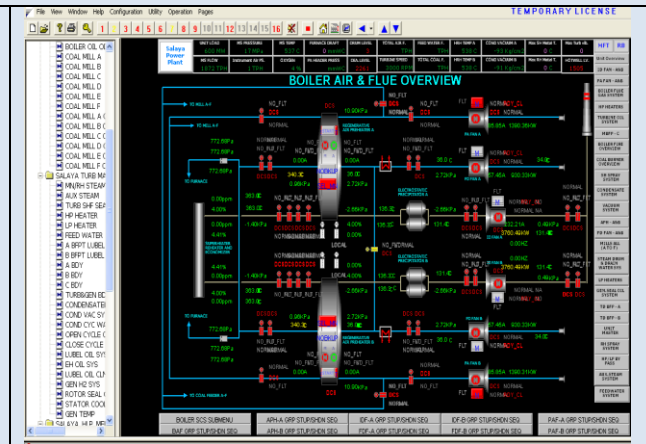
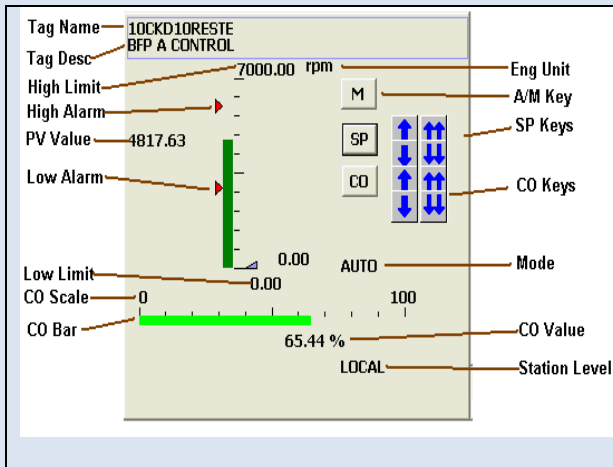


ABB HARMONY EMULATION SOFTWARE

ProSimulator Harmony emulation contains most of the standard features of real DCS console. Using PC keyboard or simulated keyboard (on the screen keyboard), the trainee can operate the simulated plant. The ABB Harmony Emulated Operator Station software includes a high-fidelity, realistic simulation of the Harmony HMI, with all of the operating displays, keyboard interactions, touch targets, and controls. Train your student operator on both Process and DCS using the same control room display types, including:

- System Menu
- Group View
- Tune block display
- Graphic View
- Trend group
- Alarm group

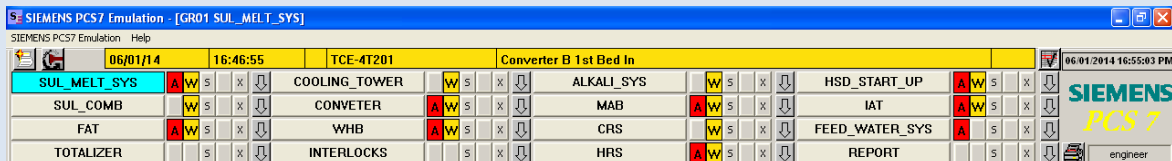




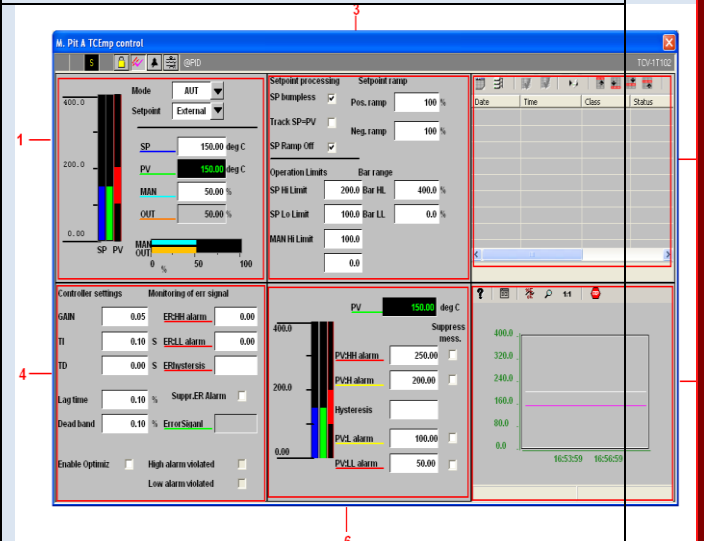
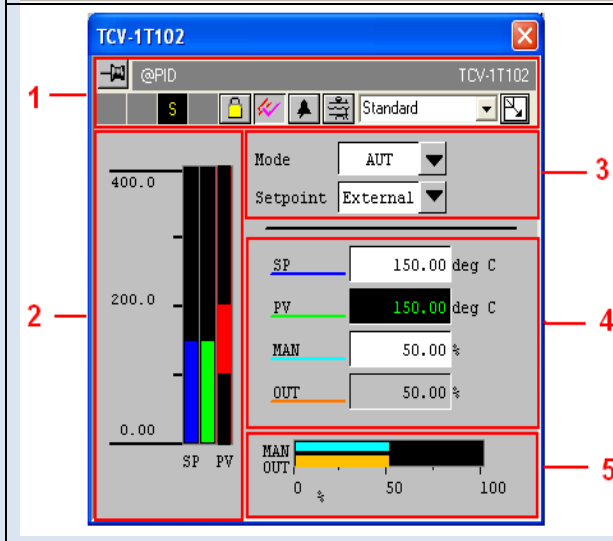
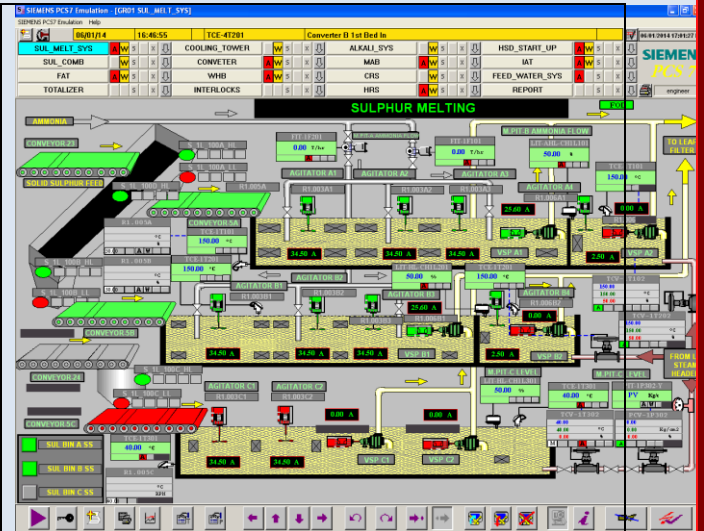
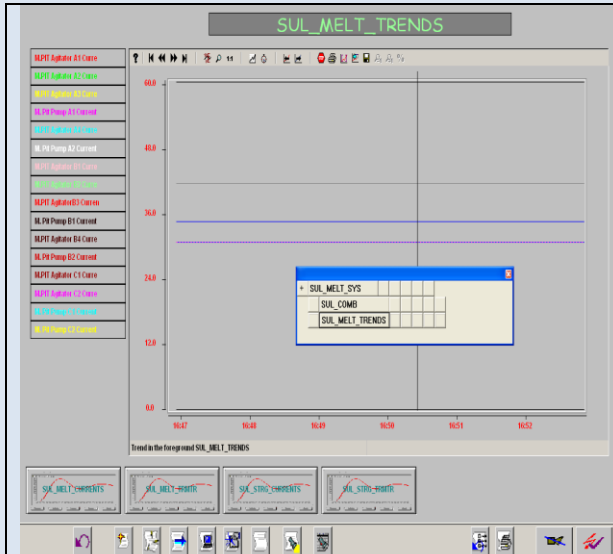
SIEMENS PCS7 EMULATION SOFTWARE

ProSimulator PCS7 emulation contains most of the standard features of real DCS console. Using PC keyboard or simulated keyboard (on the screen keyboard), the trainee can operate the simulated plant. The PCS7 Emulated Operator Station software includes a high-fidelity, realistic simulation of the SIEMENS PCS7 HMI, with all of the operating displays, keyboard interactions, touch targets, and controls. Train your student operator on both Process and DCS using the same control room display types, including:

- Overview Panel
- Alarm Module
- Trend Module
- Face plate Module
- Tuning Block display
- Graphic Page Module



NO.	Date	Time	Priority	Source	Event	Status	Info	Comments	Batch name
1	09/01/14	12:47:56	0	RLC-012A	level control LO				
2	09/01/14	12:47:53	0	LCV-AIR-SL105	Cooling water basin lev HI				
3	09/01/14	12:47:12	0	RLC-721	Level control LP Flash LO				
4	09/01/14	12:46:40	0	TE-21202	Heat Exch 26 gas exit HI				
5	09/01/14	12:46:39	0	TCE-21202	Furnace B Temperature HI				
6	09/01/14	12:46:39	0	TCE-21202	Furnace A Temperature HI				
7	09/01/14	12:46:39	0	TCE-21202	Pump Tank level Control HI				
8	09/01/14	12:46:24	0	LCV-SL104	Converter B 3rd Bed out LO				
9	09/01/14	12:46:20	0	TCE-41201	Heat Exch 26 gas exit LO				
10	09/01/14	12:46:06	0	TCE-41201	Converter A 3rd Bed out LO				
11	09/01/14	12:46:04	0	TCE-41201	Converter B 4th Bed In LO				
12	09/01/14	12:46:04	0	TCE-41201	Heat Exch 26 gas exit LO				
13	09/01/14	12:46:04	0	TCE-41201	HP Steam pressure HI				
14	09/01/14	12:46:04	0	TCE-41201	HP Steam pressure HI				
15	09/01/14	12:46:04	0	TCE-41201	HP Steam pressure HI				
16	09/01/14	12:46:04	0	TCE-41201	HP Steam pressure HI				
17	09/01/14	12:46:04	0	TCE-41201	HP Steam pressure HI				
18	09/01/14	12:46:04	0	TCE-41201	HP Steam pressure HI				
19	09/01/14	12:46:04	0	TCE-41201	HP Steam pressure HI				
20	09/01/14	12:46:04	0	TCE-41201	HP Steam pressure HI				
21	09/01/14	12:46:04	0	TCE-41201	HP Steam pressure HI				
22	09/01/14	12:46:04	0	TCE-41201	HP Steam pressure HI				
23	09/01/14	12:46:04	0	TCE-41201	HP Steam pressure HI				
24	09/01/14	12:46:04	0	TCE-41201	HP Steam pressure HI				
25	09/01/14	12:46:04	0	TCE-41201	HP Steam pressure HI				
26	09/01/14	12:46:04	0	TCE-41201	HP Steam pressure HI				
27	09/01/14	12:46:04	0	TCE-41201	HP Steam pressure HI				
28	09/01/14	12:46:04	0	TCE-41201	HP Steam pressure HI				
29	09/01/14	12:46:04	0	TCE-41201	HP Steam pressure HI				
30	09/01/14	12:46:04	0	TCE-41201	HP Steam pressure HI				
31	09/01/14	12:46:04	0	TCE-41201	HP Steam pressure HI				
32	09/01/14	12:46:04	0	TCE-41201	HP Steam pressure HI				
33	09/01/14	12:46:04	0	TCE-41201	HP Steam pressure HI				
34	09/01/14	12:46:04	0	TCE-41201	HP Steam pressure HI				
35	09/01/14	12:46:04	0	TCE-41201	HP Steam pressure HI				
36	09/01/14	12:46:04	0	TCE-41201	HP Steam pressure HI				
37	09/01/14	12:46:04	0	TCE-41201	HP Steam pressure HI				
38	09/01/14	12:46:04	0	TCE-41201	HP Steam pressure HI				
39	09/01/14	12:46:04	0	TCE-41201	HP Steam pressure HI				
40	09/01/14	12:46:04	0	TCE-41201	HP Steam pressure HI				
41	09/01/14	12:46:04	0	TCE-41201	HP Steam pressure HI				
42	09/01/14	12:46:04	0	TCE-41201	HP Steam pressure HI				
43	09/01/14	12:46:04	0	TCE-41201	HP Steam pressure HI				
44	09/01/14	12:46:04	0	TCE-41201	HP Steam pressure HI				
45	09/01/14	12:46:04	0	TCE-41201	HP Steam pressure HI				
46	09/01/14	12:46:04	0	TCE-41201	HP Steam pressure HI				



EMERSON DELTA V EMULATION SOFTWARE

ProSimulator DELTA V emulation contains most of the standard features of real DCS console. Using PC keyboard or simulated keyboard (on the screen keyboard), the trainee can operate the simulated plant. The Delta V Emulated Operator Station software includes a high-fidelity, realistic simulation of the Emerson Delta V HMI, with all of the operating displays, keyboard interactions, touch targets, and controls. Train your student operator on both Process and DCS using the same control room display types, including:

- Overview Panel
- Alarm Banner
- Trend Module
- Face plate Module
- Tuning Block display
- Graphic Page Module

